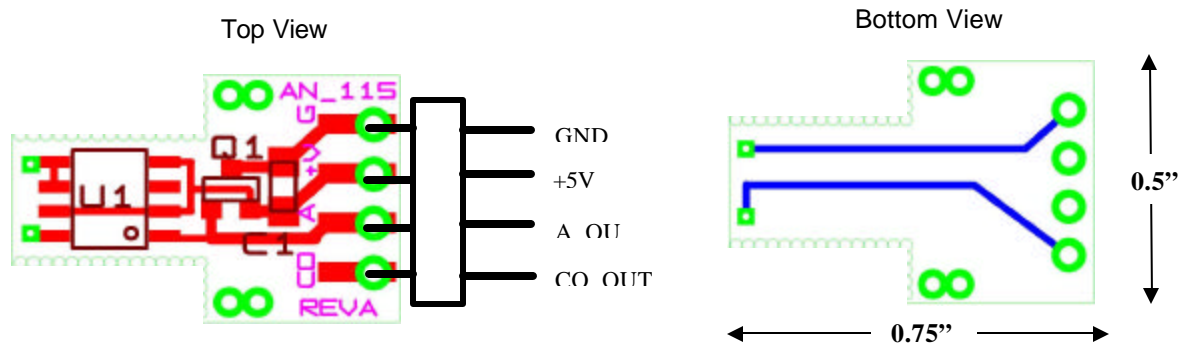


**Applications:**

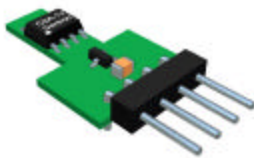
Very low current sensing with high dielectric isolation - Milliamps to 2 Amps (determined by wire gauge)

**Operation:**

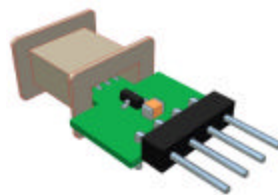
Output voltage can be measured between A-OUT1 and CO-OUT1 for a differential output or between A-OUT1 and GND for single ended output. Current measured flows through the wire that is wrapped around the bobbin. Sensitivity depends on the number of turns, the approximate level is  $31\text{mV/A}\cdot t$  (example: 12 turns of #22 gauge wire will provide an output voltage sensitivity of 370 mV/amp or 740 mV for 2 amps of current flow). The number of turns depends on the desired sensitivity and size of wire used. An optional mu-metal shield wrapped around the coil will increase the sensitivity (10-15%) and will provide significant shielding against stray fields.



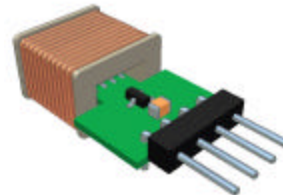
Basic PCB  
 (Included in kit)



Basic PCB with bobbin  
 (Included in kit)



Basic PCB with bobbin and  
 multi-turn copper wire



Basic PCB with bobbin,  
 multi-turn wire and shield

